

REDUCE REUSE RECYCLE



ZERO WASTE News

A publication for County of Santa Cruz GreenWaste Recovery
Commercial Customers | Winter 2025

**NEW CRV RULES
START JANUARY 2025**

Page 2



NEW CRV RULES START JANUARY 2025

California Department of Resources Recycling and Recovery (CalRecycle) oversees the state's waste management, recycling, and waste reduction programs, including the California Beverage Container Recycling Program. Starting January 1, 2025, there are new rules for California Redemption Value (CRV) beverage retailers, regarding the redemption of CRV beverage containers.

Retail beverage dealers in the program are supermarkets, community markets, gas marts, convenience stores, liquor stores, variety/drug stores, bulk stores, and health food stores that sell CRV program beverages. SB 1013 expanded the program from cans and bottles to include wine and distilled spirits containers, as well as some juice containers, effective January 1, 2024. This includes boxed wines, multi-layer pouches, paperboard cartons, cans, glass, plastic, bimetal containers and plastic #1-7 pouches.

New regulations from CalRecycle require beverage retailers with no CRV reclamation center to either:

1. Join a dealer cooperative, which collectively offers CRV redemption services, or
2. Offer in-store CRV redemption directly to customers if your location is larger than 5,000 sq feet.

Additionally, dealers must post a clear and easy-to-see sign at least 10" x 15" at all public entrances to the dealer's place of business. If there are two entrances, two signs are required. The sign should state that beverage containers may be redeemed at all open cash registers, or indicate a specific redemption location within the store.

CalRecycle will notify dealers in newly unserved zones that they have a 60-day grace period to begin redeeming beverage containers. For more information, check Calrecycle.ca.gov/BevContainer/Retailers/



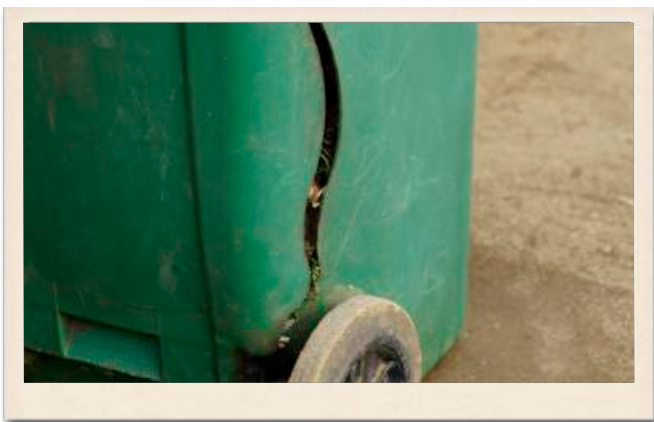
SAY “NO” TO FOREVER CHEMICALS

Many single-use to go containers may contain per- and polyfluoroalkyl substances (PFAS) to prevent liquids from leaking out. PFAS, often referred to as “forever chemicals,” are known to pose risks to human health. When warm food or hot liquid is added to these containers, PFAS can leach into your meal.

To protect your health and the environment, consider the following tips:

- If your business serves food and/beverages, be reuse-friendly and encourage customers to bring their own containers for to go orders.
- For eat-in customers, use reusable service ware to show you care about your customers' health and safety. You will avoid PFAS from single-use container liners, reduce waste, and help your business save money.
- Bring your own reusable bags, utensils, and to-go container for takeout food.
- Order food to go on a plate at your favorite restaurant. When you pick it up, place your meal in your own reusable to-go container.
- Ask for takeout beverages to be filled directly into your clean reusable container.
- Gift reusable items like bags, cups, plates, utensils, and fabric napkins.
- Stop buying water and plastic with your detergent and other cleaning products. Choose detergent sheets, stick stain removers, shampoo/soap bars.
- Opt for concentrates, tablets or make DIY all-purpose cleaners in your own spray bottles.
- When shopping for fruits and vegetables, skip the plastic bags and choose plastic-free. Package-free food is often fresher, which means it will last longer at home.
- Use reusable, washable net bags for produce.

Let's say no to forever chemicals and reduce waste together! Learn more on the Environmental Protection Agency website www.epa.gov/pfas/pfas-explained



DAMAGED CART EXCHANGE

If your GreenWaste garbage, recycling or organics container is damaged, leaking, or has graffiti, please contact GreenWaste customer service at **(831) 426-2711** to request an exchange.

4-STREAM SORTING STATIONS FOR THE KITCHEN, DINING AND BREAK ROOM

Set up a 4-stream sorting station in the kitchen, break room, and for your bus station in the dining room. Your four streams include receptacles for recyclables, garbage, food waste, and a bucket for liquids and ice (if no sink is available). In food prep areas, use smaller containers to make food scrap collection easy.

Tips to set up your 4-stream sorting stations:

- Grey or black trashcan for paper napkins and wrappers
- Blue recycling bin for bottles, plastics, cans, clean paper and cardboard
- Green organics container for food scraps, scraping plates
- If there is no sink nearby, provide a bucket for liquids and ice

It takes everyone for successful sorting! Review with the team what is food waste, recyclable, and trash. Stickers for your containers and posters showing what goes where are available from GreenWaste Recovery or the Santa Cruz County Zero Waste Team. Email ZeroWaste@santacruzcounty.us or call GreenWaste Recovery (831) 426-2711.

Thank you for doing the right thing to keep food and recyclable resources out of the landfill.



REDUCING THE “YUCK” IN YOUR GREEN CART

- Layer food scraps with leaves or yard waste
- Use baking soda at the bottom to reduce odors
- Put your cart out every week for service
- Wash and disinfect with a vinegar solution

Mix:

- o 1/2 gal. warm water
- o 2 tablespoons baking soda
- o 1/4 cup vinegar
- o 4 drops of essential oil (for fragrance)

Pour into empty cart and let sit for 15 minutes. Brush with broom then dump out. Leave upside down to dry.





PITCH IN SANTA CRUZ COUNTY

The Pitch In Initiative is a Santa Cruz County-wide effort to eliminate litter and illegal dumping.

Supporting this initiative are Congress members Lofgren and Panetta, Speaker Rivas, Senator Laird, Watsonville, Capitola, Santa Cruz, Scotts Valley, agencies, and organizations including our libraries, The Community Foundation, Farm Bureau, Santa Cruz METRO, Santa Cruz Land Trust, Dept. of Fish and Wildlife, State Parks, CalTrans, law enforcement, and others.

Join this effort to help make Santa Cruz the cleanest county in the state. Share the Pitch In Initiative with your friends and neighbors, look for Pitch In signs, and join a cleanup. Go to www.pitchinsantacruz.org to learn more.



EARTH DAY SANTA CRUZ 2025

Saturday, April 19 • 11 AM-4 PM • Cooper Street, Downtown Santa Cruz

Make a difference by becoming an Earth Day sponsor today!

Join us in this annual event as we bring our community together to promote environmental stewardship, healthy living, and sustainability. Together with local businesses, schools, and community organizations, we engage our citizens through education, hands-on learning, and inspirational activities, and place a special emphasis on youth participation.

www.scearthday.org



EARTH DAY WATSONVILLE

Sunday, April 27 • 12 NOON - 4 PM • Watsonville Plaza

Join us in healing the earth for our children.

- Conservation resources
- Food
- Music
- Kids' activities



SAVE THE DATE!



EARTH DAY SANTA CRUZ 2025

FIND DETAILS AND
MORE EVENTS ON PAGE 5

County of Santa Cruz Community Development & Infrastructure

701 Ocean Street, Room 410
Santa Cruz, CA 95060
(831) 454-2160

Presort Standard
U.S. Postage
PAID
Complete Mailing
Service, Inc.



Printed on 55% recycled 30% post-consumer waste paper processed chlorine-free, using soy-based inks.

RECYCLING RESOURCES



Recycle Information Line 831-454-2333

- What and where to recycle (recorded messages)

Curbside Refuse, Recycling and Yard Waste Collection 800-665-2209

(operated by GreenWaste Recovery)
www.greenwaste.com/santa-cruz-county

- Begin new service
- Report missed recycling or trash service
- Request delivery or removal of carts
- Obtain oil recycling jugs



County Community Development & Infrastructure. 831-454-2160

www.santacruzcountyrecycles.org

- Apartments and business recycling inquiries
- Complaints, compliments or suggestions
- Report roadside trash 831-477-3999

Household Hazardous Waste 831-454-2606

(recorded messages)

- Schedule for free disposal
- Non-hazardous alternatives

Contact Zero Waste Outreach Team 831 454-2160

or ZeroWaste@santacruzcounty.us

- Questions
- Volunteer as a Zero Waste champion



Composting Resources www.compostsantacruzcounty.org

Buena Vista Landfill & Recycling Center 831-454-5153

- Recorded information 831-454-2430

1231 Buena Vista Drive, Watsonville 95076
Open: Mon-Tues, Thurs-Sat 7:30 AM to 3:30 PM;
Wed 7:30 AM to 2:30 PM

HHW Facility - Open: Wed 7:30 AM to 2:30 PM;
Fri and Sat 7:30 AM to 3:30 PM

Ben Lomond Transfer Station & Recycling Center 831-336-3951

- Recorded information 831-454-2430

9835 Newell Creek Road, Ben Lomond 95005
Open: Mon-Tues, Thurs-Sat 7:30 AM to 3:30 PM;
Wed 7:30 AM to 2:30 PM

HHW Facility - Open Thursdays 7:30-3:30

California Grey Bears Recycling Centers 831-479-1055 ext. 235

Mid County, 2710 Chanticleer Avenue, Santa Cruz 95065
Open: 7:30-3:45 daily

Buena Vista Landfill -
Open: Mon-Tues, Thurs-Sat 7:30 AM to 3:30 PM;
Wed 7:30 AM to 2:30 PM

Ben Lomond Transfer Station -
Open: Mon-Tues, Thurs-Sat 7:30 AM to 3:30 PM;
Wed 7:30 AM to 2:30 PM

City of Santa Cruz Resource Recovery Facility & Recycling Center 831-420-6270

- Open to unincorporated county residents in Davenport and Bonny Doon only

605 Dimeo Lane, Santa Cruz 95060
Open: Mon-Sat 7:30-3:30

HHW Facility - Open: Saturdays 7:30-3:30



Para información en español sobre el reciclaje en las áreas no incorporadas del condado de Santa Cruz, favor de llamar al (800) 665-2209.