

CONTACT US

831.920.6707
www.greenwaste.com



PAY ONLINE

To access our online payment portal you can go to: www.greenwaste.com or <https://portal.greenwaste.com> to enter the site directly.



MAIL IT

Remit your payment to
GreenWaste Recovery, LLC
PO Box 11089
San Jose, CA 95103-1089

Please include your payment stub and make sure to write your Customer ID on the check to ensure expedited processing.



CALL US

Payments can be made over the phone Monday through Friday 8AM-5PM.

831.920.6707 | phone
877.203.8970 | toll free



DELIVER IT

Bring your payment to our Marina office.

Card payments only, accepted Monday-Friday 8 AM-4 PM

14207 Del Monte Blvd.
Marina, CA 93933



@gogwr



@greenwaste



Schedule a Bulky Pickup

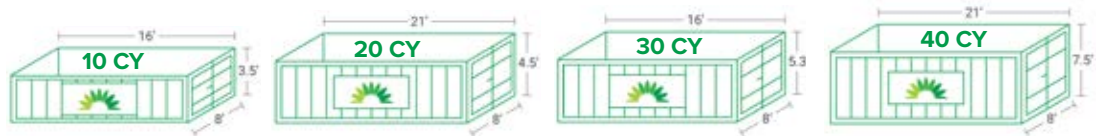
Make your cleanup project easier with curbside pickup services for bulky items. Donate useful items such as furniture, housewares, clothing, and more. Residents may request up to three (3) bulky items reuse collections each year at no additional charge.



Each collection may include up to two (2) cubic yards of reusable materials (boxed or bagged), five (5) e-Waste items (televisions, laptops, monitors, etc.) and two (2) appliances or bulky items. Appliances containing Freon (i.e. refrigerators, air conditioning units) count as two (2) bulky items. Additional eligible items or collection events may be scheduled for an additional charge. We do not collect hazardous waste, auto parts, construction materials or commercial waste. Contact us at **831.920.6707** to schedule your pickup.

Debris Boxes for Big Cleanup Jobs

Do you need to rent a debris box for your construction, remodeling, or cleanup project? GreenWaste Recovery provides temporary boxes ranging in size from 10 to 40 cubic yards to suit your cleanup needs. To learn more about rates and sizes, and the rules and regulations for debris boxes in your city, visit www.greenwaste.com and select "drop box" under your service area. To arrange for delivery, please contact customer service at **831.920.6707**.



New What Goes Where Guide

Sorting your waste into the wrong container can send valuable resources to the landfill. GreenWaste has created an acceptance list to guide you on what items go where, and help keep useful resources out of the landfill. Find the "What Goes Where Guide" by selecting your city under what goes where drop menu and other helpful tools at www.greenwaste.com.



Holiday Schedule

GreenWaste will provide regular collection service on

January 20th | Martin Luther King Jr. Day

February 17th | Presidents Day

Please set out your containers on your regular collection day by 6 AM



Good Neighbor Cart Etiquette

Please help GreenWaste and your neighbors by following basic cart etiquette.

- Set out all carts no later than 6 AM on collection day, or the night before.
- Place carts side-by-side on the street, 2-feet apart with wheels tightly against the curb.
- Do not overfill carts or bins; lids must be completely closed to prevent spillage and litter.
- Please remove carts from the curb once they are serviced.

Physical Limitations Program: The above guidelines may not apply to customers participating in the physical limitations program, or who have one directional or two directional services. If you would like to apply for the physical space limitations program, please call our customer service department at **831.920.6707** to request an application.



What is Wishcycling and Why Does it Matter?



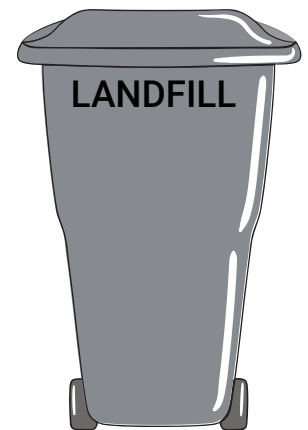
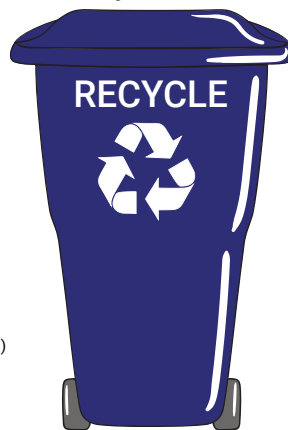
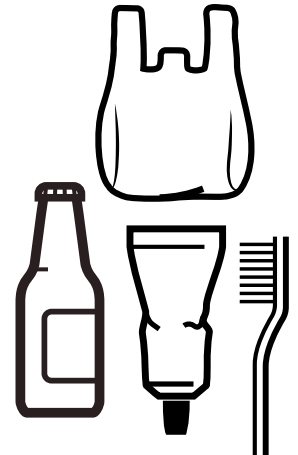
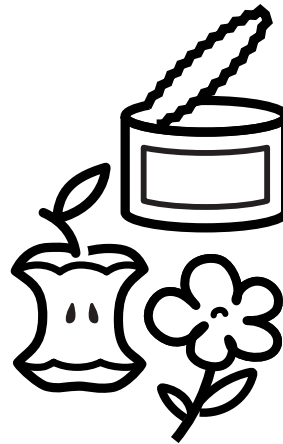
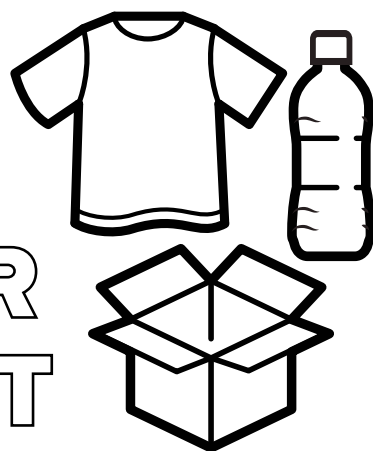
Wishcycling is the act of putting something non-recyclable in the recycling bin with the hope it will end up recycled. Although well intended, wishcycling can cause more harm than good. Items often wishcycled this time of year include holiday lights, holiday bows and ribbons, Styrofoam, toys, metallic giftwrap, and plastic-coated paper bags. The most commonly wishcycled items are plastics other than 1, 2 & 5, film plastics, batteries, and textiles.

To confirm something is recyclable use the free “What Goes Where” app or visit www.whatgoeswhere.info. If you don't have time to check if something actually belongs in the recycling bin, a good general rule is “When in doubt, leave it out.”

Green Kids

COLOR & SORT

Color the items, then cross out the one that does not go in the cart below.



RECYCLE: box and bottle, not the t-shirt (donate or trash it!)
ORGANICS: food and plant, not the can (recycle it!)
LANDFILL: toothbrush, toothpaste and plastic bag, not the bottle (recycle it!)